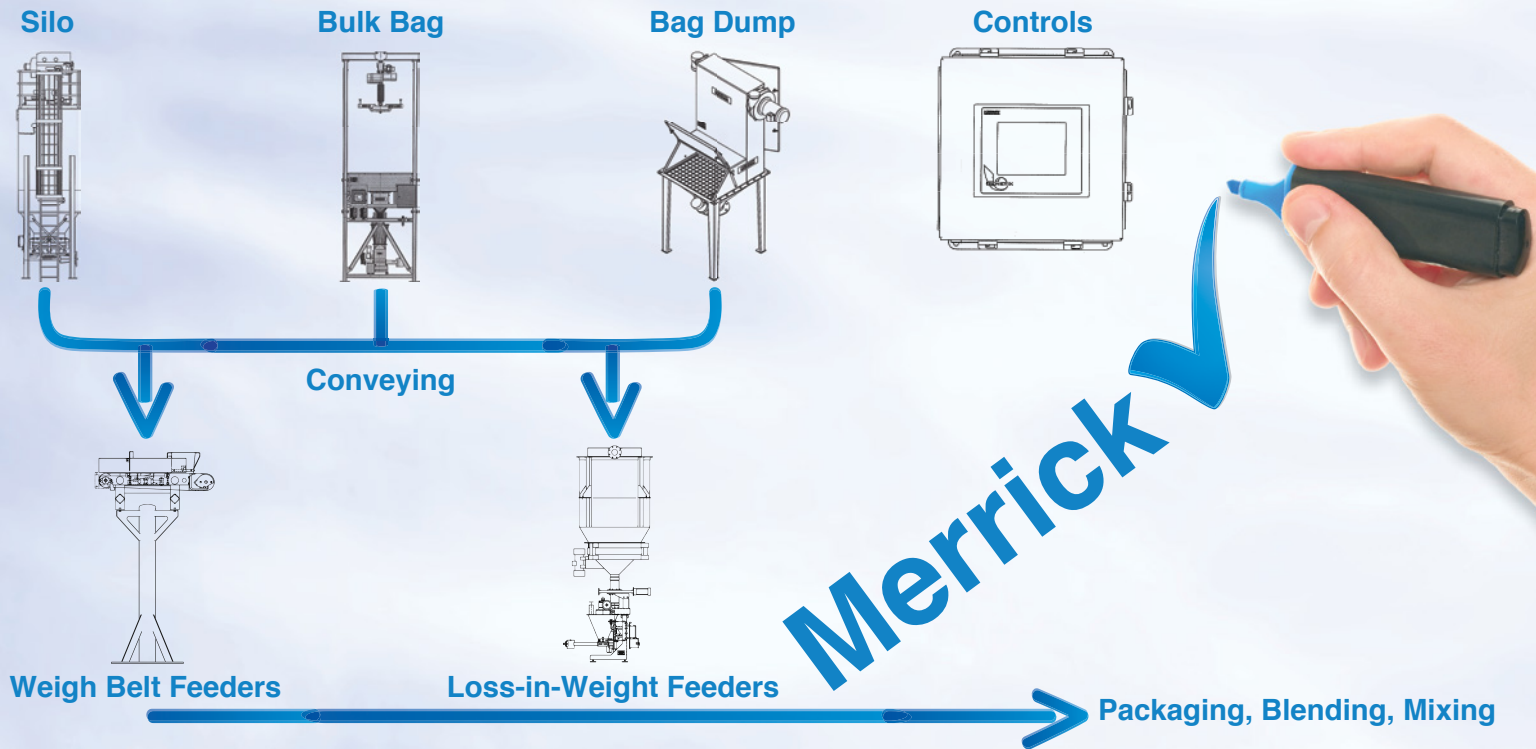


MORE THAN JUST A FEEDER COMPANY - COMPLETE WEIGHING SYSTEMS

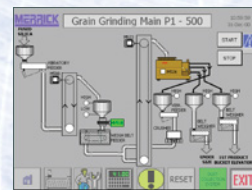
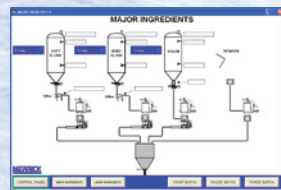


MERRICK HAS WEIGHING AND FEEDING SYSTEMS FOR



INTEGRATED CONTROL SYSTEMS

APPLICATION CREDENTIALS



MERRICK's state of the art HMI control systems allow you to view and control processes within a system application and seamlessly integrate with our feeder systems.

- Awarded NTEP Certificate of Compliance by US Government
- Awarded original US Patents for dynamic Weighing
- Providing dynamic weighing solutions since 1908

FAMILY OF
MERRICK
COMPANIES

10 ARTHUR DRIVE LYNN HAVEN, FL 32444 USA
CALL WORLDWIDE +1 850.265.3611
EN ESPAÑOL +1 850.271.7834
WWW.MERRICK-INC.COM



Copyright 2015 MERRICK Industries, Inc. All information contained herein is the property of MERRICK Industries, Inc. and is released upon condition that it is not to be reproduced or copied, in whole or in part, or used for furnishing information to others, or for any other purpose detrimental to the interests of MERRICK Industries, Inc. Patents are issued or pending covering original ideas.

DYNAMIC INNOVATIONS SINCE 1908
WEIGHING, FEEDING & CONTROLS

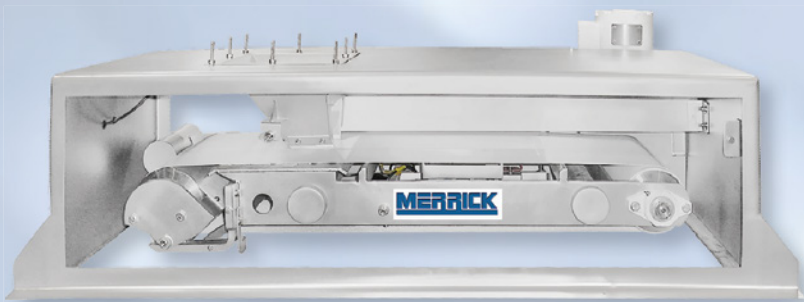
CHEMICAL AND PLASTICS INDUSTRIES



RUGGED, ACCURATE & RELIABLE GRAVIMETRIC FEEDING SYSTEMS



MODEL 970I INDUSTRIAL WEIGH BELT FEEDERS



- 0.25% accuracy
- 304 stainless steel welded construction
- Front/Back stainless steel access doors
- Cantilevered for quick belt replacement
- 60 lbs/hour minimum feedrate
- 90,000 lbs/hour maximum feedrate
- 6", 12", 20", 24" belt widths

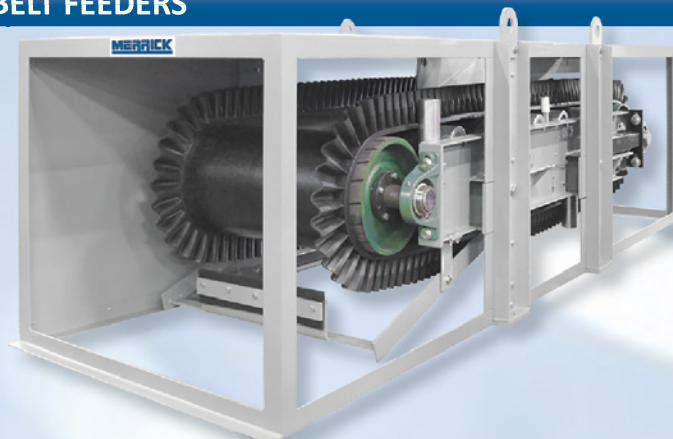
MODEL 570 LOSS-IN-WEIGHT FEEDERS



- Modular "quick change" design
- USDA/Dairy 3A design available
- Single, twin screw or vibratory discharge
- 304 stainless steel wash down construction
- Hopper capacities to 300 cubic feet
- Batching or continuous operation
- Vertical hopper agitation available

MODEL 455M WEIGH BELT FEEDERS

- Belt widths from 24" to 48"
- Endless 4" sidewall belting
- Cantilevered feeder frame to allow for endless belt replacement from the side of the feeder
- Lengths 5' to 60'+
- Painted carbon steel construction
- Feedrates from 300 to 180,000 lbs/hour



MODEL 520 LOSS-IN-WEIGHT FEEDERS

- Economical loss-in-weight
- 304 stainless steel feeder construction
- 304 stainless or carbon steel platform scale
- Batching or continuous operation
- Hopper capacities to 50 cubic feet
- Direct DC or AC motor/reducer drive



MODEL 455MM WEIGH BELT FEEDERS



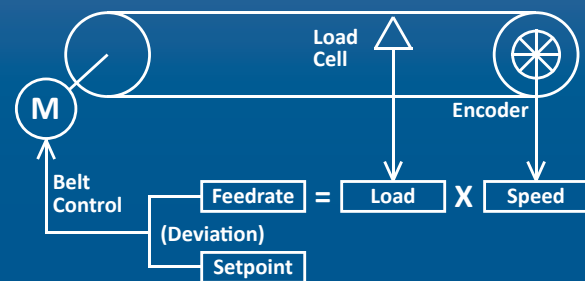
- Belt widths 12" and 18"
- 2.5" diameter sealed for life carrying idlers
- Cantilevered feeder frame to allow for endless belt replacement from the side of the feeder
- Lengths 3.28' (1 meter) to 20'
- Rugged construction in a small package
- Painted carbon steel construction
- Side mounted AC or DC motor drive
- Feedrates from 300 to 45,000 lbs/hour

MODEL 530 VIBRATORY LOSS-IN-WEIGHT FEEDERS



- Low maintenance vibratory drive system
- Gentle handling of friable materials
- High accuracy batching better than 0.1%
- Provides low continuous feedrates
- Built-in high accuracy weighing system
- Vertical hopper agitation available
- Wide range of feedrates and materials
- Variety of discharge tubes and trays

THEORY OF OPERATION



WEIGH BELT FEEDER STRENGTHS VS. LOSS-IN-WEIGHT STRENGTHS

- High feedrates
- Large batches
- Gentle on friable materials
- Smaller installation footprint
- Always in gravimetric mode
- Less susceptible to disturbance
- Can control at low feedrates
- High accuracy for small batches
- Can meter liquids
- Handles semi-floodable materials
- Better suited for sealed or pressurized applications

THEORY OF OPERATION

